



GMSUP5D-OPT

Including inspection window component **GMSUP5D-B2**

for detector code *GMSC245D-FM* and

lamp test code *GMTEST5D-FM*

Suitable for ducts with diameter **greater than 150 mm**

and thickness less than **1.9 mm**

The support is supplied with a series of hand tools for correct installation

Complies with **ATEX Directive 2014/34/EU - Category 2D/2G**

FM APPROVED Certified - TÜV Certified



GMSUP5D-B2



GMSUP5D

Specifically for sprayer nozzle code *GMUGS-CVO-I2-FM*

Complies with **ATEX Directive 2014/34/EU - Category 2D/2G**

Suitable for ducts with diameter **greater than 150 mm**

and thickness less than **1.9 mm**

The support is supplied with a series of hand tools for correct installation

FM APPROVED Certified - TÜV Certified



GMSUP5D-FXU

ATTACHMENT SYSTEM FOR EXTINGUISHING SET GMEXG-P-02-FM

The single bracket consists of:

- support for pipe fixing [code *GMSU5D*]

- specific support for the extinguishing set,

Suitable for ducts with diameter **greater than 150 mm**

and thickness less than **1.9 mm**

The support is supplied with a series of hand tools for correct installation

Complies with **ATEX Directive 2014/34/EU - Category 2D/2G**

FM APPROVED Certified - TÜV Certified



GMSUP2-EX-TU - MOUNTING KIT

for the flame detector [*GMFD005-EX*],

spark detector [*GMSC243TH-xx*], and

test lamp [*GMTEST4-xx*].

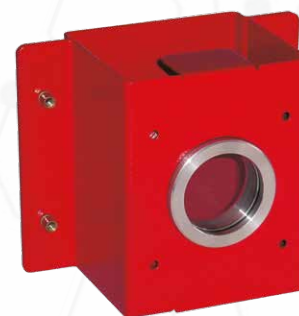
Made of carbon steel painted RAL3000

Complete with rivets for pipe fixing and gasket.

Complies with

ATEX Directive 2014/34/EU - Category 2D/2G

TÜV Certified



GM-G10-008 - STEEL RING

FOR CLEANING THE SUPPORT'S PORTHOLE

through connection to the compressed air system,
[apply to article GMSUP2-EX-TU].

Minimum compressed air pressure 6.5 bar - 1/8" connection joint
Estimated consumption 120-130 L/min

This accessory can be installed only during production
of the spark detector [GMSC243TH-EX] or test lamp [GMTEST4-EX].

NOT compatible with the new spark detectors [GMSC245D-FM]
or test lamp [GMTEST5D-FM].



GMSUP-F-IX

WALL OR CEILING MOUNTING KIT

FOR THE FLAME DETECTOR [code GMFD005D]

Made of AISI 304 stainless steel

Can be aimed.

GMSUP-F-IX-D

WALL OR CEILING MOUNTING KIT

FOR THE FLAME DETECTOR [code GMFD005-EX]

Made of AISI 304 stainless steel

Can be aimed.



GMUGS-CVO-S1 - MOUNTING KIT FOR

SPRAY NOZZLES [CODE GMUGS-CVO-M-IX]

Flange size: 80 mm x 80 mm x 15 mm, 3/4" joint

NOT suitable for the new nozzles [code GMUGS-CVO-I2-FM]



GMSTV-F3-12 - MOUNTING KIT

THREE-PIECE JOINT

FOR TEMPERATURE SENSORS

Made of AISI 316 - 1/2" connection joint



GMSTV-FX1-12 - THERMAL WELL

for all versions of thermal probes with system
for 'self-maintenance' of the thermal contact.

Made of Anticorodal aluminium

Suitable for installation in zones classified **ATEX: Category 2D/2G**

